

Wilimowo 2, 11-041 Olsztyn, tel/fax.: 89 527 43 63, e-mail: transcorn@transcorn.pl

Equivalent to OEM-Number

A00231-9899-136

Filter cartridge Mann H34.1158/4 ø340 x 450 mm



Equivalent to OEM-Number

A290-8001-X737

Wire guide sapphire 16.0 x 18.0 x 4.0 mm



Equivalent to OEM-Number

A290-8002-X737

Wire guide sapphire 16.0 x 15.0 x 4.0 mm



Equivalent to OEM-Number

A290-8004-V316

Lower guide roller assy



Equivalent to OEM-Number

A290-8004-V335

Reel divisible



Equivalent to OEM-Number

A290-8004-X410

Felt pad



Equivalent to OEM-Number

A290-8004-X713

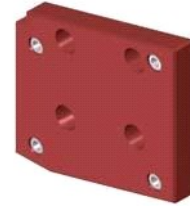
Roller



Equivalent to OEM-Number

A290-8005-X722

Isolation plate



Equivalent to OEM-Number

A290-8011-X750

Wire guide D = 0.20 mm upper/lower H = 5.0 mm



Equivalent to OEM-Number

A290-8011-X751

Wire guide D = 0.25 mm upper/lower H = 5.0 mm



Equivalent to OEM-Number

A290-8011-X833

Wire guide D = 0.205 mm upper/lower H = 3.0 mm



Equivalent to OEM-Number

A290-8011-X834

Wire guide D = 0.255 mm upper/lower H = 3.0 mm



Equivalent to OEM-Number

A290-8018-X443

Wire Guide D = 0.20 mm lower H = 3.0 mm



Equivalent to OEM-Number

A290-8018-X444

Wire Guide D = 0.25 mm lower H = 3.0 mm



15-3-2005

Equivalent to OEM-Number

A290-8018-X445

Wire Guide D = 0.30 mm lower H = 3.0 mm



Equivalent to OEM-Number

A290-8018-X463

Wire Guide D = 0.20 mm upper H = 3.0 mm



Equivalent to OEM-Number

A290-8018-X464

Wire Guide D = 0.25 mm upper H = 3.0 mm



Equivalent to OEM-Number

A290-8018-X465

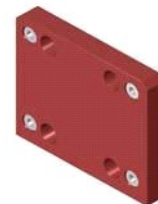
Wire Guide D = 0.30 mm upper H = 3.0 mm



Equivalent to OEM-Number

A290-8021-X709

Lower isolation plate



Equivalent to OEM-Number

A290-8021-X745

Insulating guide



Equivalent to OEM-Number

A290-8021-X762

Wire guide D = 0.05 mm up - 28.0 mm H = 5.0 mm



15-3-2005

Equivalent to OEM-Number

A290-8021-X763

Wire guide D = 0.10 mm up - 28.0 mm H = 5.0 mm



Equivalent to OEM-Number

A290-8021-X764

Wire guide D = 0.15 mm up - 28.0 mm H = 5.0 mm



Equivalent to OEM-Number

A290-8021-X765

Wire guide D = 0.20 mm up - 28.0 mm H = 5.0 mm



Equivalent to OEM-Number

A290-8021-X766

Wire guide D = 0.25 mm up - 28.0 mm H = 5.0 mm



Equivalent to OEM-Number

A290-8021-X767

Wire guide D = 0.30 mm up - 28.0 mm H = 5.0 mm



Equivalent to OEM-Number

A290-8021-X772

Wire guide D = 0.05 mm low - 28.0 mm H = 5.0 mm



Equivalent to OEM-Number

A290-8021-X773

Wire guide D = 0.10 mm low - 28.0 mm H = 5.0 mm



Equivalent to OEM-Number

A290-8021-X774

Wire guide D = 0.15 mm low - 28.0 mm H = 5.0 mm



Equivalent to OEM-Number

A290-8021-X775

Wire guide D = 0.20 mm low - 28.0 mm H = 5.0 mm



Equivalent to OEM-Number

A290-8021-X776

Wire guide D = 0.25 mm low - 28.0 mm H = 5.0 mm



Equivalent to OEM-Number

A290-8021-X777

Wire guide D = 0.30 mm low - 28.0 mm H = 5.0 mm



Equivalent to OEM-Number

A290-8021-Y701

Sapphire roller D = 5.0 x 8.0 mm



Equivalent to OEM-Number

A290-8021-Y705

Nozzle D = 8.0 mm



Equivalent to OEM-Number

A290-8021-Y745

Upper nozzle D = 5.5 mm



Equivalent to OEM-Number

A290-8021-Y755

Lower nozzle D = 5.5 mm



Equivalent to OEM-Number

A290-8032-V742

Roller assy R



Equivalent to OEM-Number

A290-8032-V746

Roller assy L



Equivalent to OEM-Number

A290-8032-V853

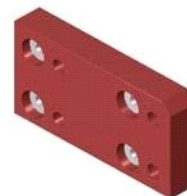
Roller assembly



Equivalent to OEM-Number

A290-8032-X334

Isolating plate



Equivalent to OEM-Number

A290-8032-X626

Wire cutter



Equivalent to OEM-Number

A290-8032-X732

Wire guide D = 0.105 mm lower with AWF



15-3-2005

Equivalent to OEM-Number

A290-8032-X734

Wire guide D = 0.155 mm lower with AWF



Equivalent to OEM-Number

A290-8032-X735

Wire guide D = 0.205 mm lower with AWF



Equivalent to OEM-Number

A290-8032-X736

Wire guide D = 0.255 mm lower with AWF



Equivalent to OEM-Number

A290-8032-X737

Wire guide D = 0.305 mm lower with AWF



Equivalent to OEM-Number

A290-8032-X762

Replaced by A290-8032-X732

Equivalent to OEM-Number

A290-8032-X764

Replaced by A290-8032-X734

Equivalent to OEM-Number

A290-8032-X766

Lower wire guide D = 0.25 mm



Equivalent to OEM-Number

A290-8032-X767

Replaced by A290-8032-X737

Equivalent to OEM-Number

A290-8032-X772

Wire guide diamond D = 0.105 mm upper with AWF

Equivalent to OEM-Number

A290-8032-X774

Wire guide diamond D = 0.155 mm upper with AWF

Equivalent to OEM-Number

A290-8032-X775

Wire guide diamond D = 0.205 mm upper with AWF

Equivalent to OEM-Number

A290-8032-X776

Wire guide diamond D = 0.255 mm upper with AWF

Equivalent to OEM-Number

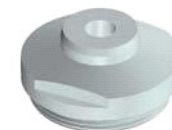
A290-8032-X777

Wire guide diamond D = 0.305 mm upper with AWF

Equivalent to OEM-Number

A290-8032-Y611

Nozzle D = 5.5 mm



Equivalent to OEM-Number

A290-8032-Z882

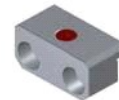
Power feeder W1 - W4 Auto Thread



Equivalent to OEM-Number

A290-8037-X645

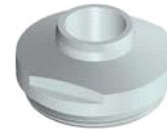
Die guide



Equivalent to OEM-Number

A290-8037-X689

Nozzle D = 11.0 mm



Equivalent to OEM-Number

A290-8037-X870

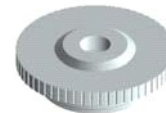
Nozzle D = 13.0 mm



Equivalent to OEM-Number

A290-8037-X879

Nozzle D = 5.5 mm



Equivalent to OEM-Number

A290-8037-X919

Replaced by A290-8039-Y914

Equivalent to OEM-Number

A290-8037-X950

Replaced by A290-8039-Y913

Equivalent to OEM-Number

A290-8037-X960

Belt 13 x 1172 mm



Equivalent to OEM-Number

A290-8037-X961

Belt 13 x 1422 mm



Equivalent to OEM-Number

A290-8037-X966

Upper belt 13 x 1376 mm



Equivalent to OEM-Number

A290-8037-X967

Belt 13 x 1628 mm



Equivalent to OEM-Number

A290-8038-X919

Replaced by A290-8039-Y914

Equivalent to OEM-Number

A290-8039-X860

Upper belt 14 x 1112 mm (W1)



Equivalent to OEM-Number

A290-8039-X861

Lower belt 14 x 1417 mm (W1)



Equivalent to OEM-Number

A290-8039-X919

Replaced by A290-8039-Y914

Equivalent to OEM-Number

A290-8039-Y913

Roller A



Equivalent to OEM-Number

A290-8039-Y914

Roller B



Equivalent to OEM-Number

A290-8040-X860

Upper belt 14 x 1315 mm (W2)



Equivalent to OEM-Number

A290-8040-X861

Lower belt 14 x 1620 mm (W2)



Equivalent to OEM-Number

A290-8046-X860

Upper belt 21 x 1645 mm (W3)



Equivalent to OEM-Number

A290-8046-X861

Lower belt 21 x 1962 mm (W3)



Equivalent to OEM-Number

A290-8047-X860

Upper belt 21 x 2080 mm (W4)



Equivalent to OEM-Number

A290-8047-X861

Lower belt 21 x 2400 mm (W4)



Equivalent to OEM-Number

A290-8048-X759

Power feeder



Equivalent to OEM-Number

A290-8048-X771

Water nozzle upper D = 7.0 mm



Equivalent to OEM-Number

A290-8048-X772

Water nozzle lower D = 7.0 mm



Equivalent to OEM-Number

A290-8048-Y771

Nozzle



Equivalent to OEM-Number

A290-8048-Y772

Nozzle



Equivalent to OEM-Number

A290-8092-X702

Guide upper D = 0.10 mm



Equivalent to OEM-Number

A290-8092-X703

Guide upper D = 0.14 mm



Equivalent to OEM-Number

A290-8092-X704

Guide upper D = 0.15 mm



Equivalent to OEM-Number

A290-8092-X705

Guide upper D = 0.20 mm



Equivalent to OEM-Number

A290-8092-X706

Guide upper D = 0.25 mm



Equivalent to OEM-Number

A290-8092-X707

Guide upper D = 0.30 mm



Equivalent to OEM-Number

A290-8092-X708

Guide upper D = 0.33 mm



Equivalent to OEM-Number

A290-8092-X712

Guide lower D = 0.10 mm



Equivalent to OEM-Number

A290-8092-X713

Guide lower D = 0.14 mm



Equivalent to OEM-Number

A290-8092-X714

Guide lower D = 0.15 mm



Equivalent to OEM-Number

A290-8092-X715

Guide lower D = 0.20 mm



Equivalent to OEM-Number

A290-8092-X716

Guide lower D = 0.25 mm



Equivalent to OEM-Number

A290-8092-X717

Guide lower D = 0.30 mm



Equivalent to OEM-Number

A290-8092-X718

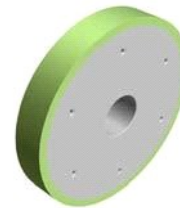
Guide lower D = 0.33 mm



Equivalent to OEM-Number

A290-8101-X371

Brake shoe



Equivalent to OEM-Number

A290-8101-X706

Replaced by A290-8101-X734

Equivalent to OEM-Number

A290-8101-X716

Replaced by A290-8101-X744

Equivalent to OEM-Number

A290-8101-X730

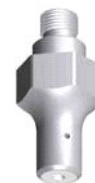
Guide upper D = 0.10 mm



Equivalent to OEM-Number

A290-8101-X732

Guide upper D = 0.15 mm



Equivalent to OEM-Number

A290-8101-X733

Guide upper D = 0.20 mm



Equivalent to OEM-Number

A290-8101-X734

Guide upper D = 0.25 mm



Equivalent to OEM-Number

A290-8101-X735

Guide upper D = 0.30 mm



Equivalent to OEM-Number

A290-8101-X740

Guide lower D = 0.10 mm



Equivalent to OEM-Number

A290-8101-X742

Guide lower D = 0.15 mm



Equivalent to OEM-Number

A290-8101-X743

Guide lower D = 0.20 mm



Equivalent to OEM-Number

A290-8101-X744

Guide lower D = 0.25 mm



Equivalent to OEM-Number

A290-8101-X745

Guide lower D = 0.30 mm



Equivalent to OEM-Number

A290-8101-X750

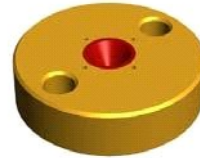
Power feeder Alpha



Equivalent to OEM-Number

A290-8101-X753

Upper sub die guide



Equivalent to OEM-Number

A290-8101-X755

Nozzle cap



Equivalent to OEM-Number

A290-8101-X756

Lower nozzle



Equivalent to OEM-Number

A290-8101-X765

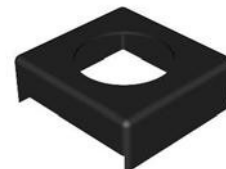
Ceramic roller



Equivalent to OEM-Number

A290-8101-X771

Cover



Equivalent to OEM-Number

A290-8101-X776

Upper nozzle



Equivalent to OEM-Number

A290-8101-X777

Lower nozzle for taper cut



Equivalent to OEM-Number

A290-8101-X778

Upper nozzle for big taper cut



Equivalent to OEM-Number

A290-8101-X779

Lower nozzle



Equivalent to OEM-Number

A290-8101-Z383

Feed roller



Equivalent to OEM-Number

A290-8102-X620

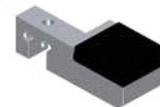
Guide



Equivalent to OEM-Number

A290-8102-X656

Chuck



Equivalent to OEM-Number

A290-8102-X657

Cutting electrode



Equivalent to OEM-Number

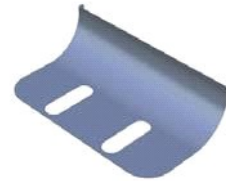
A290-8102-X659

Replaced by A290-8102-X656

Equivalent to OEM-Number

A290-8102-X684

Spring



Equivalent to OEM-Number

A290-8102-X751

Upper nozzle



Equivalent to OEM-Number

A290-8102-X752

Upper nozzle for taper cut



Equivalent to OEM-Number

A290-8102-X764

Nozzle



Equivalent to OEM-Number

A290-8102-X771

Lower nozzle



Equivalent to OEM-Number

A290-8102-X772

Lower nozzle for taper cut



Equivalent to OEM-Number

A290-8102-X774

Lower nozzle D = 4.0 mm



Equivalent to OEM-Number

A290-8102-X775

Upper nozzle D = 4.0 mm



Equivalent to OEM-Number

A290-8104-X612

Block



Equivalent to OEM-Number

A290-8104-X620

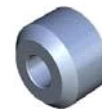
Guide



Equivalent to OEM-Number

A290-8104-X633

Detection pin



Equivalent to OEM-Number

A290-8104-X705

Upper wire guide 45° D = 0.20 mm



Equivalent to OEM-Number

A290-8104-X706

Upper wire guide 45° D = 0.25 mm



Equivalent to OEM-Number

A290-8104-X774

Lower nozzle D=2 mm



Equivalent to OEM-Number

A290-8104-X775

Upper nozzle D=2 mm



Equivalent to OEM-Number

A290-8109-X776

Nozzle



Equivalent to OEM-Number

A290-8109-X778

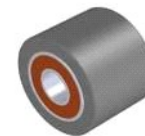
Nozzle



Equivalent to OEM-Number

A290-8110-V384/STD

Roller assembly



Equivalent to OEM-Number

A290-8110-X382

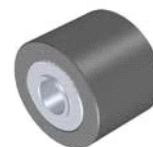
Pressure roller



Equivalent to OEM-Number

A290-8110-X383

Drive roller



Equivalent to OEM-Number

A290-8110-X715

Lower wire guide D = 0.20 mm



Equivalent to OEM-Number

A290-8110-X716

Lower wire guide D = 0.25 mm



Equivalent to OEM-Number

A290-8110-X717

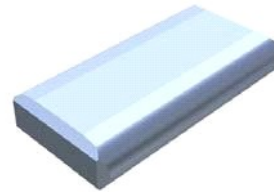
Lower wire guide D = 0.30 mm



Equivalent to OEM-Number

A290-8110-X750

Power feeder



Equivalent to OEM-Number

A290-8110-X774

Sub die guide



Equivalent to OEM-Number

A290-8110-Y726

Sub Die Guide



Equivalent to OEM-Number

A290-8110-Y734

Upper wire guide D = 0.25 mm



Equivalent to OEM-Number

A290-8110-Y744

Lower wire guide D = 0.25 mm



Equivalent to OEM-Number

A290-8110-Y774

Guide



Equivalent to OEM-Number

A290-8110-Z715

Lower wire guide 45° D = 0.20 mm



Equivalent to OEM-Number

A290-8110-Z716

Lower wire guide 45° D = 0.25 mm



Equivalent to OEM-Number

A290-8111-X776

Nozzle



Equivalent to OEM-Number

A290-8112-X382

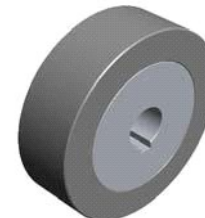
Roller



Equivalent to OEM-Number

A290-8112-X383

Roller



Equivalent to OEM-Number

A660-8011-T648/LWG

Replaced by 24.56.603

Equivalent to OEM-Number

A660-8011-T684/LWG

Lower cable



Equivalent to OEM-Number

A660-8011-T711/DET

Ground cable



Equivalent to OEM-Number

A660-8011-T711/LWG

Ground cable



Equivalent to OEM-Number

A91L-0001-0066

Flow meter



Equivalent to OEM-Number

A97L-0001-0652/20

Wire guide D = 0.21 mm upper/lower H = 15.0 mm



Equivalent to OEM-Number

A97L-0001-0652/26

Wire guide D = 0.26 mm upper/lower H = 15.0 mm



Equivalent to OEM-Number

A97L-0001-0664/15S1P

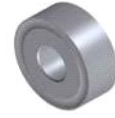
Power feeder 15.9 x 6.4 mm



Equivalent to OEM-Number

A97L-0001-0664/25S1P

Power feeder 25.4 x 9.5 mm



Equivalent to OEM-Number

A97L-0001-0670/1260Z

Bearing



Equivalent to OEM-Number

A97L-0001-0670/1450Z

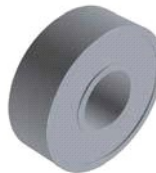
Bearing



Equivalent to OEM-Number

A97L-0001-0670/1560ZZ

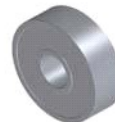
Bearing



Equivalent to OEM-Number

A97L-0001-0670/1650HH

Bearing



Equivalent to OEM-Number

A97L-0001-0670/DRF2280H

Bearing



Equivalent to OEM-Number

A97L-0001-0670/LF1450ZZ

Bearing



Equivalent to OEM-Number

A97L-0001-0670/LF1470ZZ

Bearing



Equivalent to OEM-Number

A97L-0001-0986

Replaced by A97L-0001-0670/1260Z

Equivalent to OEM-Number

A97L-0124-T001

Rolling tip complete



Equivalent to OEM-Number

A97L-0126-0001/15S1P

Electrode pin



Equivalent to OEM-Number

A97L-0201-0369/6001LLU

Bearing



Equivalent to OEM-Number

A97L-0201-0369/6203 LLU

Replaced by A290-8101-X765

Equivalent to OEM-Number

A97L-0201-0369/FL608LLB

Replaced by A97L-0001-0670/DRF2280H

Equivalent to OEM-Number

A97L-0203-0097

Connector for filter A99L-0107-0007/6A (04.01.331)



Equivalent to OEM-Number

A98L-0001-0938/1555

Clip



Equivalent to OEM-Number

A98L-0001-0938/1573

Clip



Equivalent to OEM-Number

A98L-0001-0972

V-packing



Equivalent to OEM-Number

A98L-0001-0973

V-packing



Equivalent to OEM-Number

A98L-0004-0153/L3260

Replaced by A98L-0004-0359/L3260

Equivalent to OEM-Number

A98L-0004-0153/L3330

Replaced by A98L-0004-0359/L3330

Equivalent to OEM-Number

A98L-0004-0359/L1870

Conveyer belt 0.7 x 17 x 1870 mm



Equivalent to OEM-Number

A98L-0004-0359/L1930

Conveyer belt 0.7 x 17 x 1930 mm



Equivalent to OEM-Number

A98L-0004-0359/L3260

Conveyer belt 0.7 x 17 x 3260 mm



Equivalent to OEM-Number

A98L-0004-0359/L3330

Conveyer belt 0.7 x 17 x 3330 mm



Equivalent to OEM-Number

A98L-0004-0359/L4110

Conveyer belt 0.7 x 17 x 4110 mm



Equivalent to OEM-Number

A98L-0004-0359/L4290

Conveyer belt 0.7 x 17 x 4290 mm



Equivalent to OEM-Number

A99L-0107-0001

Filter cartridge Mann H34.1158/2 ø340 x 441 mm



15-3-2005

Equivalent to OEM-Number

A99L-0107-0002

Filter cartridge Mann H34.1158/2 ø340 x 441 mm



Equivalent to OEM-Number

A99L-0107-0003

Filter cartridge Mann H34.1158/4 ø340 x 450 mm

15-3-2005



Equivalent to OEM-Number

A99L-0107-0007/6-A

Filter cartridge ø340 x 300 mm

