

Equivalent to OEM-Number

Extended tip flush cup



Equivalent to OEM-Number

**P421 A030 P00**

Limit switch



Equivalent to OEM-Number

**P840 F000 P69**

Replaced by XBRRD F608 HDD

Equivalent to OEM-Number

**S601 D899 P01**

DC motor



Equivalent to OEM-Number

**S642 D854 P06**

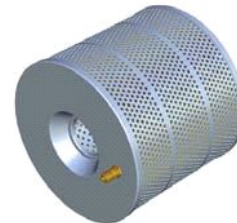
Filter cartridge Mann H31.1033  $\varnothing$ 300 x 500 mm



Equivalent to OEM-Number

**S642 D854 P13**

Filter cartridge  $\varnothing$ 340 x 300 mm



Equivalent to OEM-Number

**S648 N712 P93**

Coupler



Equivalent to OEM-Number

**S649 D899 P14**

Float switch



Equivalent to OEM-Number

**S684 D840 P78**

Set screw low ceramic



Equivalent to OEM-Number

**S684 D898 P02**

Replaced by S684 D898 P61

Equivalent to OEM-Number

**S684 D898 P61**

Jet nozzle D = 1.5 mm



Equivalent to OEM-Number

**S801 D824 P01**

Flow meter



Equivalent to OEM-Number

**S811 N724 P01**

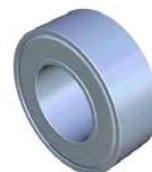
One way clutch



Equivalent to OEM-Number

**S859 N219 P33**

Bearing L-1910ZZ





Equivalent to OEM-Number

**S859 N219 P39**

Replaced by XBRRD-SSL1260

Equivalent to OEM-Number

**S859 N315 P01**

Bearing



Equivalent to OEM-Number

**S859 N319 P08**

Bearing



Equivalent to OEM-Number

**S859 N319 P10**

Bearing



Equivalent to OEM-Number

**S859 N319 P31**

Bearing SSRF1980DD



Equivalent to OEM-Number

**S859 N319 P33**

Bearing SSRF1970DD



Equivalent to OEM-Number

**S913 N313 P11**

Wave washer 1410201-410



Equivalent to OEM-Number

**S922 N040 P07**

Retaining ring



Equivalent to OEM-Number

**S932 N110 P02**

O-ring D = 3.5 x 1.8 mm (1AP4)



Equivalent to OEM-Number

**S932 N110 P08**

O-ring D = 10.0 x 1.8 mm (1AP10)



Equivalent to OEM-Number

**S932 N420 P15**

O-ring D = 15.0 x 2.0 mm (CO 0605A)



Equivalent to OEM-Number

**S932 N420 P20**

O-ring D = 20.0 x 2.0 mm (CO 0612A)



Equivalent to OEM-Number

**S932 N420 P23**

O-ring D = 23.0 x 2.0 mm (CO 0616A)



Equivalent to OEM-Number

**S932 N421 P21**

O-ring D = 25.0 x 2.0 mm (CO 0520)



Equivalent to OEM-Number

**S932 N421 P35**

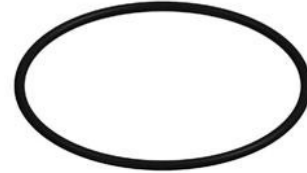
O-ring D = 46.0 x 2.0 mm (CO 0534A)



Equivalent to OEM-Number

**S932 N421 P40**

O-ring



Equivalent to OEM-Number

**X052 B040 G62**

Diamond guide upper/lower D = 0.10 mm



Equivalent to OEM-Number

**X052 B040 G63**

Diamond guide upper/lower D = 0.15 mm



Equivalent to OEM-Number

**X052 B040 G64**

Diamond guide upper/lower D = 0.20 mm



Equivalent to OEM-Number

**X052 B040 G65**

Diamond guide upper/lower D = 0.25 mm



Equivalent to OEM-Number

**X052 B040 G66**

Diamond guide upper/lower D = 0.30 mm



Equivalent to OEM-Number

**X052 B054 G51**

Diamond guide upper/lower D = 0.105 mm



Equivalent to OEM-Number

**X052 B054 G52**

Diamond guide upper/lower D = 0.155 mm



Equivalent to OEM-Number

**X052 B054 G53**

Diamond guide upper/lower D = 0.205 mm



Equivalent to OEM-Number

**X052 B054 G54**

Diamond guide upper/lower D = 0.255 mm



Equivalent to OEM-Number

**X052 B054 G55**

Diamond guide upper/lower D = 0.305 mm



Equivalent to OEM-Number

**X052 B054 G56**

Diamond guide upper/lower D = 0.335 mm



Equivalent to OEM-Number

**X052 B092 G54**

Lower diamond guide D = 0.20 mm



Equivalent to OEM-Number

**X052 B092 G55**

Lower diamond guide D = 0.25 mm



Equivalent to OEM-Number

**X052 B092 G56**

Lower diamond guide D = 0.30 mm



Equivalent to OEM-Number

**X052 B092 G61**

Lower diamond guide D = 0.10 mm



Equivalent to OEM-Number

**X052 B092 G62**

Lower diamond guide D = 0.15 mm



Equivalent to OEM-Number

**X052 B092 G64**

Replaced by X052 B176 G54

Equivalent to OEM-Number

**X052 B102 G51**

Diamond wire guide upper D = 0.10 mm



Equivalent to OEM-Number

**X052 B102 G52**

Diamond wire guide upper D = 0.15 mm



Equivalent to OEM-Number

**X052 B102 G53**

Diamond wire guide upper D = 0.20 mm



Equivalent to OEM-Number

**X052 B102 G54**

Diamond wire guide upper D = 0.25 mm



Equivalent to OEM-Number

**X052 B102 G55**

Diamond wire guide upper D = 0.30 mm



Equivalent to OEM-Number

**X052 B115 G53**

Wire Guide  $\varnothing$  0.20 mm (2 diamonds)



Equivalent to OEM-Number

**X052 B115 G54**

Wire Guide  $\varnothing$  0.25 mm (2 diamonds)



Equivalent to OEM-Number

**X052 B115 G55**

Wire Guide  $\varnothing$  0.30 mm (2 diamonds)



Equivalent to OEM-Number

**X052 B123 G52**

Wire guide upper D = 0.155 mm





Equivalent to OEM-Number

**X052 B123 G53**

Wire guide upper D = 0.205 mm

Equivalent to OEM-Number

**X052 B123 G54**

Wire guide upper D = 0.255 mm

Equivalent to OEM-Number

**X052 B123 G56**

Wire guide upper D = 0.305 mm

Equivalent to OEM-Number

**X052 B140 G53**

See X052 B176 G53

Equivalent to OEM-Number

**X052 B140 G54**

See X052 B176 G54

Equivalent to OEM-Number

**X052 B140 G55**

See X052 B176 G55

Equivalent to OEM-Number

**X052 B140 G56**

Replaced by X052 B176 G55



Equivalent to OEM-Number

**X052 B176 G51**

Wire guide lower D = 0.105 mm



Equivalent to OEM-Number

**X052 B176 G52**

Wire guide lower D = 0.155 mm



Equivalent to OEM-Number

**X052 B176 G53**

Wire guide lower D = 0.205 mm



Equivalent to OEM-Number

**X052 B176 G54**

Wire guide lower D = 0.255 mm



Equivalent to OEM-Number

**X052 B176 G55**

Wire guide lower D = 0.305 mm



Equivalent to OEM-Number

**X052 B240 G51**

See X052 B123 G52

Equivalent to OEM-Number

**X052 B240 G52**

See X052 B123 G53



Equivalent to OEM-Number

**X052 B240 G53**

See X052 B123 G54

Equivalent to OEM-Number

**X052 B240 G54**

See X052 B123 G56

Equivalent to OEM-Number

**X052 B241 G51**

See X052 B176 G51

Equivalent to OEM-Number

**X052 B241 G52**

See X052 B176 G52

Equivalent to OEM-Number

**X052 B241 G53**

See X052 B176 G53

Equivalent to OEM-Number

**X052 B241 G54**

See X052 B176 G54

Equivalent to OEM-Number

**X052 B241 G55**

See X052 B176 G55

Equivalent to OEM-Number

**X052 B243 G61**

Lower diamond guide D = 0.20 mm



Equivalent to OEM-Number

**X052 B243 G62**

Lower diamond guide D = 0.30 mm



Equivalent to OEM-Number

**X052 B243 G63**

Lower diamond guide D = 0.10 mm



Equivalent to OEM-Number

**X052 B243 G64**

Lower diamond guide D = 0.15 mm



Equivalent to OEM-Number

**X052 B243 G65**

Lower diamond guide D = 0.25 mm



Equivalent to OEM-Number

**X052 B244 G51**

See X052 C458 G51

Equivalent to OEM-Number

**X052 B387 G51**

Lower wire guide Ø 0.208 mm



Equivalent to OEM-Number

**X052 B387 G52**

Lower wire guide  $\varnothing$  0.258 mm



Equivalent to OEM-Number

**X052 B387 G53**

Lower wire guide  $\varnothing$  0.308 mm



Equivalent to OEM-Number

**X052 C458 G51**

Wire guide upper D = 0.105 mm



Equivalent to OEM-Number

**X053 C082 G51**

Diamond guide upper/lower D = 0.205 mm



Equivalent to OEM-Number

**X053 C082 G56**

Diamond guide upper/lower D = 0.255 mm



Equivalent to OEM-Number

**X053 C082 G58**

Diamond guide upper/lower D = 0.105 mm



Equivalent to OEM-Number

**X053 C082 G60**

Diamond guide upper/lower D = 0.155 mm



Equivalent to OEM-Number

**X053 C082 G65**

Diamond guide upper/lower D = 0.305 mm



Equivalent to OEM-Number

**X053 C104 G52**

Diamond guide lower D = 0.10 mm



Equivalent to OEM-Number

**X053 C104 G53**

Diamond guide lower D = 0.15 mm



Equivalent to OEM-Number

**X053 C104 G54**

Diamond guide lower D = 0.20 mm



Equivalent to OEM-Number

**X053 C104 G55**

Diamond guide lower D = 0.25 mm



Equivalent to OEM-Number

**X053 C104 G56**

Diamond guide lower D = 0.30 mm



Equivalent to OEM-Number

**X053 C137 G54**

Diamond guide upper D = 0.20 mm





Equivalent to OEM-Number

**X053 C137 G55**

Diamond guide upper D = 0.25 mm



Equivalent to OEM-Number

**X053 C137 G62**

See X053 C137 G52

Equivalent to OEM-Number

**X053 C137 G63**

See X053 C137 G53

Equivalent to OEM-Number

**X053 C137 G64**

See X053 C137 G54

Equivalent to OEM-Number

**X053 C137 G65**

See X053 C137 G55

Equivalent to OEM-Number

**X053 C137 G66**

See X053 C137 G56

Equivalent to OEM-Number

**X053 C137 G67**

See X053 C137 G52

Equivalent to OEM-Number

**X053 C137 G68**

See X053 C137 G53

Equivalent to OEM-Number

**X053 C137 G69**

See X053 C137 G54

Equivalent to OEM-Number

**X053 C137 G72**

See X053 C137 G55

Equivalent to OEM-Number

**X053 C137 G73**

See X053 C137 G56

Equivalent to OEM-Number

**X053 C142 G51**

Filter cartridge Mann H31.967  $\varnothing$ 300 x 500 mm



Equivalent to OEM-Number

**X053 C162 H01**

Isolator plate ceramic , up



Equivalent to OEM-Number

**X053 C188 G54**

Diamond wire guide lower D = 0.20 mm





Equivalent to OEM-Number

**X053 C188 G55**

Diamond wire guide lower D = 0.25 mm



Equivalent to OEM-Number

**X053 C188 G56**

Diamond wire guide lower D = 0.30 mm



Equivalent to OEM-Number

**X053 C188 G57**

Diamond wire guide lower D = 0.10 mm



Equivalent to OEM-Number

**X053 C188 G58**

Diamond wire guide lower D = 0.15 mm



Equivalent to OEM-Number

**X053 C241 G52**

Set screw



Equivalent to OEM-Number

**X053 C245 H02**

Power feed dies holder



Equivalent to OEM-Number

**X053 C299 G51**

Eccentric Die



Equivalent to OEM-Number

**X053 C314 H01**

Isolator plate ceramic low



Equivalent to OEM-Number

**X053 C376 G51**

Quill



Equivalent to OEM-Number

**X053 C431 G51**

Replaced by X052 B115 G53

Equivalent to OEM-Number

**X053 C431 G52**

Replaced by X052 B115 G54

Equivalent to OEM-Number

**X053 C443 H01**

Isolator plate ceramic low



Equivalent to OEM-Number

**X053 C491 H01**

Water nozzle lower D = 4 mm



Equivalent to OEM-Number

**X053 C492 H01**

Replaced by X053 C621 H01

Equivalent to OEM-Number

**X053 C508 G51**

HSWB die guide



Equivalent to OEM-Number

**X053 C522 G51**

AF Pinch roller with gear



Equivalent to OEM-Number

**X053 C522 G52**

Capstan roller with gear



Equivalent to OEM-Number

**X053 C524 G51**

Set screw upper



Equivalent to OEM-Number

**X053 C525 H01**

Replaced by X053 C621 H01

Equivalent to OEM-Number

**X053 C621 H01**

Flush cup lower D = 4 mm (plastic)



Equivalent to OEM-Number

**X053 C621 H01**

Flush cup lower D = 4 mm (ceramic)



Equivalent to OEM-Number

**X053 C621 H02**

Flush cup lower D = 6 mm (plastic)



Equivalent to OEM-Number

**X053 C621 H02**

Flush cup lower D = 6 mm (ceramic)



Equivalent to OEM-Number

**X053 C621 H03**

Flush cup lower D = 8 mm (plastic)



Equivalent to OEM-Number

**X053 C621 H03**

Flush cup lower D = 8 mm (ceramic)



Equivalent to OEM-Number

**X053 C778 G51**

Capstan roller wire collection (gear type)



Equivalent to OEM-Number

**X053 C779 G51**

Pinch roller wire collection (gear type)



Equivalent to OEM-Number

**X053 C834 G51**

Upper diamond guide D = 0.10 mm



Equivalent to OEM-Number

**X053 C834 G52**

Upper diamond guide D = 0.15 mm



Equivalent to OEM-Number

**X053 C834 G53**

Upper diamond guide D = 0.20 mm



Equivalent to OEM-Number

**X053 C834 G54**

Upper diamond guide D = 0.25 mm



Equivalent to OEM-Number

**X053 C834 G56**

Upper diamond guide D = 0.30 mm



Equivalent to OEM-Number

**X053 C934 H01**

Replaced by X056 C075 H01

Equivalent to OEM-Number

**X054 D125 H03**

See X054 D125 H05

Equivalent to OEM-Number

**X054 D125 H05**

Power feeder upper/lower



Equivalent to OEM-Number

**X054 D129 H04**

Power feeder lower



Equivalent to OEM-Number

**X054 D162 G54**

Set screw



Equivalent to OEM-Number

**X054 D199 H01**

Power feeder upper



Equivalent to OEM-Number

**X054 D209 H11**

Water nozzle lower D = 4 mm



Equivalent to OEM-Number

**X054 D209 H12**

Water nozzle lower D = 6 mm



Equivalent to OEM-Number

**X054 D209 H13**

Water nozzle lower D = 8 mm



Equivalent to OEM-Number

**X054 D216 H01**

Power feeder upper



Equivalent to OEM-Number

**X054 D345 H01**

Power feeder upper



Equivalent to OEM-Number

**X054 D345 H01**

Power feeder upper TiN coated (special long life carbide)



Equivalent to OEM-Number

**X054 D412 G53**

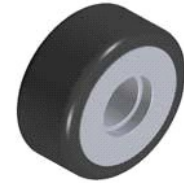
Capstan roller



Equivalent to OEM-Number

**X054 D413 G51**

Pinch roller



Equivalent to OEM-Number

**X054 D476 H01**

See X054 D129 H04

Equivalent to OEM-Number

**X054 D476 H02**

Upper power feed contact



Equivalent to OEM-Number

**X054 D826 H01**

Jet nozzle D = 1.5 mm



Equivalent to OEM-Number

**X054 D826 H02**

Jet nozzle D = 0.5 mm



Equivalent to OEM-Number

**X054 D826 H04**

Jet nozzle D = 1.0 mm



Equivalent to OEM-Number

**X054 D881 H01**

Replaced by X054 D881 H03

Equivalent to OEM-Number

**X054 D881 H02**

Replaced by X054 D881 H04

Equivalent to OEM-Number

**X054 D881 H03**

Flush cup lower D = 4 mm (Plastic)



Equivalent to OEM-Number

**X054 D881 H03**

Flush cup lower D = 4 mm (Ceramic)



Equivalent to OEM-Number

**X054 D881 H04**

Flush cup lower D = 8 mm (Plastic)





Equivalent to OEM-Number

**X054 D881 H04**

Flush cup lower D = 8 mm (ceramic)



Equivalent to OEM-Number

**X055 C008 G51**

Pinch roller



Equivalent to OEM-Number

**X055 C009 G51**

Capstan Roller



Equivalent to OEM-Number

**X055 C118 H02**

Power feeder



Equivalent to OEM-Number

**X056 C075 H01**

Power feeder upper/lower



Equivalent to OEM-Number

**X056 C109 G51**

Replaced by X056 C110 G51

Equivalent to OEM-Number

**X056 C110 G51**

Isolation plate



Equivalent to OEM-Number

**X056 C273 G51**

Isolator plate ceramic



Equivalent to OEM-Number

**X056 C326 G51**

Wire cutter unit



Equivalent to OEM-Number

**X056 C356 G51**

Isolator plate ceramic



Equivalent to OEM-Number

**X056 C845 H04**

Aspirator



Equivalent to OEM-Number

**X058 D054 H02**

Jet nozzle D = 1.5 mm



Equivalent to OEM-Number

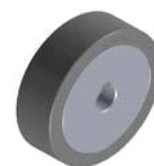
**X058 D070 G51**

Replaced by X058 D186 G51

Equivalent to OEM-Number

**X058 D077 G51**

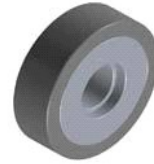
Capstan roller



Equivalent to OEM-Number

**X058 D078 G51**

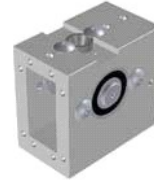
Pinch roller



Equivalent to OEM-Number

**X058 D186 G51**

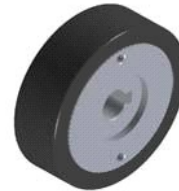
Wire cutter unit



Equivalent to OEM-Number

**X058 D339 G51**

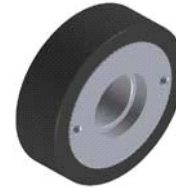
Capstan roller



Equivalent to OEM-Number

**X058 D340 G51**

Pinch roller



Equivalent to OEM-Number

**X058 D376 H01**

Replaced by X268 D912 H01

Equivalent to OEM-Number

**X058 D438 H01**

Replaced by X058 D501 H01

Equivalent to OEM-Number

**X058 D501 H01**

Gear



Equivalent to OEM-Number

**X174 D199 H02**

Felt pad



Equivalent to OEM-Number

**X177 B558 H02**

HSWB carbide holder



Equivalent to OEM-Number

**X179 D318 H03**

Upper nozzle D = 6 mm



Equivalent to OEM-Number

**X179 D323 H02**

Cap screw



Equivalent to OEM-Number

**X179 D490 H02**

Lower water nozzle D = 6 mm



Equivalent to OEM-Number

**X179 D875 H02**

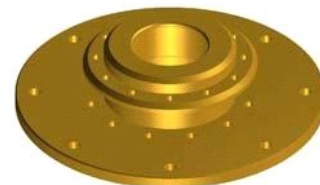
Water nozzle upper D = 6 mm



Equivalent to OEM-Number

**X182 B458 G52**

Upper nozzle adapter



Equivalent to OEM-Number

**X183 C378 H01**

Flush cup upper D = 4.0 mm



Equivalent to OEM-Number

**X183 C378 H02**

Flush cup upper D = 6 mm



Equivalent to OEM-Number

**X183 C378 H03**

Flush cup upper D = 8.0mm



Equivalent to OEM-Number

**X183 C378 H04**

Flush cup upper D = 10 mm



Equivalent to OEM-Number

**X183 C439 H01**

Water nozzle upper D = 4.5 mm



Equivalent to OEM-Number

**X183 C439 H02**

Water nozzle upper D = 6 mm



Equivalent to OEM-Number

**X183 C439 H03**

Water nozzle upper D = 8 mm



Equivalent to OEM-Number

**X183 C442 H01**

Lower roller



Equivalent to OEM-Number

**X184 D045 H01**

Center shaft



Equivalent to OEM-Number

**X184 D959 H01**

Water nozzle upper D = 4 mm



Equivalent to OEM-Number

**X184 D959 H02**

Water nozzle upper D = 8 mm



Equivalent to OEM-Number

**X184 D960 H01**

Water nozzle upper D = 4.5 mm



Equivalent to OEM-Number

**X184 D960 H03**

Water nozzle upper D = 8.0 mm



Equivalent to OEM-Number

**X186 C793 H01**

Flush cup upper D = 4 mm



Equivalent to OEM-Number

**X186 C793 H02**

Flush cup upper D = 8 mm



Equivalent to OEM-Number

**X196 C197 H01**

Upper nozzle D = 4.0 mm



Equivalent to OEM-Number

**X196 C197 H02**

Upper nozzle D = 8.0 mm



Equivalent to OEM-Number

**X196 C350 H01**

Replaced by X196 C350 H03

Equivalent to OEM-Number

**X196 C350 H03**

Aspirator



Equivalent to OEM-Number

**X196 C450 H01**

Nozzle holder



Equivalent to OEM-Number

**X196 C451 H01**

See X196 C197 H01

Equivalent to OEM-Number

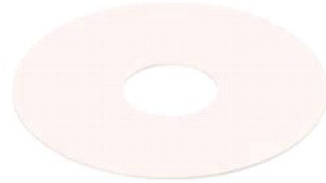
**X199 D297 H01**

See X199 D297 H02

Equivalent to OEM-Number

**X199 D297 H02**

Vinyl cover



Equivalent to OEM-Number

**X203 C145 H01**

Replaced by X056C845H04

Equivalent to OEM-Number

**X203 C145 H04**

Aspirator



Equivalent to OEM-Number

**X203 C607 H03**

Reversion roller



Equivalent to OEM-Number

**X208 D675 H01**

Replaced by X209 D212 H01

Equivalent to OEM-Number

**X209 D212 H01**

Lower power feeder holder





Equivalent to OEM-Number

**X268 D912 H01**

Cutter



Equivalent to OEM-Number

**XBRRD F608 HDD**

Bearing



Equivalent to OEM-Number

**XBRRD-SSL1260**

Bearing

